

# CENTERLINE SURVEY PLAT

GUE-821-(2.59)(2.69)

GUERNSEY COUNTY VALLEY TOWNSHIP

SEC. 21, T1, R3

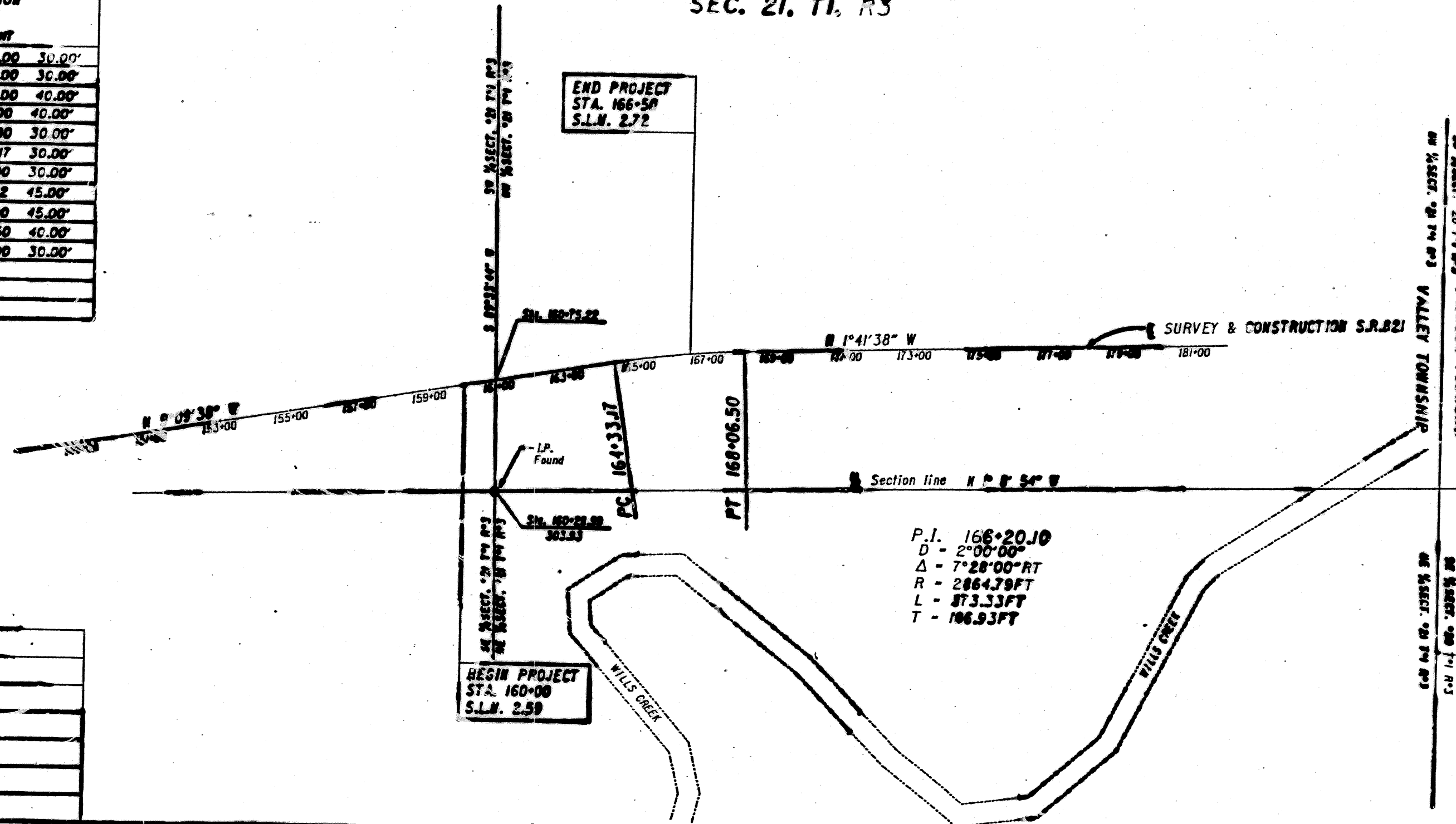
PROJECT NO.	GUE-821-(2.59)(2.69)	OHIO	21
DATE		FHWA	24
		REGION	5

RIGHT OF WAY PLANS  
STATE PROJECT 059600

○ INDICATES 1/4" x 30" REBAR WITH MODEL  
5000 PREMARK OR EQUAL PLASTIC YELLOW  
IDENTIFICATION CAP WITH PROJECTED O.D.S.  
STAMP MARK.

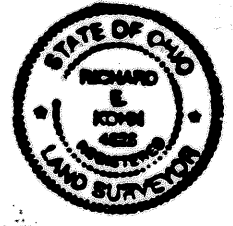
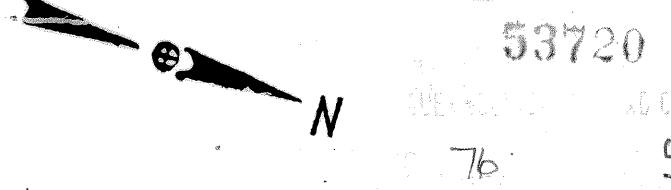
RIGHT-OF-WAY MONUMENTS (○) ARE TO BE PLACED ON THE RIGHT-OF-WAY AT THE FOLLOWING LOCATION BEFORE CONSTRUCTION BY STATE FORCES.

LEFT	RIGHT
STA. 158+00.00 30.00'	STA. 158+00.00 30.00'
STA. 159+80.00 30.00'	STA. 159+80.00 30.00'
STA. 160+15.00 50.00'	STA. 160+05.00 40.00'
STA. 160+40.00 50.00'	STA. 161+25.00 40.00'
STA. 160+82.89 50.00'	STA. 161+60.00 30.00'
STA. 161+20.00 50.00'	STA. 164+33.17 30.00'
STA. 161+75.00 50.00'	STA. 165+15.00 30.00'
STA. 162+00.00 45.00'	STA. 165+42.12 45.00'
STA. 164+33.17 45.00'	STA. 166+15.00 45.00'
STA. 165+45.30 52.70'	STA. 168+05.50 40.00'
STA. 165+70.00 55.00'	STA. 168+50.00 30.00'
STA. 166+30.00 55.00'	
STA. 168+25.00 55.00'	
STA. 168+50.00 30.00'	



SCALE IN FEET  
0 200 400

NOT TO SCALE



I HEREBY CERTIFY THAT THIS PLAT AND DESCRIPTIONS WERE PREPARED BY ME FROM SURVEY DATA FURNISHED BY THE STATE OF OHIO, DEPARTMENT OF TRANSPORTATION.

Richard C. Yeh JULY 16, 1992  
REGISTERED SURVEYOR 5286 DATE NO.

RECEIVED 12-30-93 AT 10:23 AM  
RECORDED 1-3-94 FILE NO. \_\_\_\_\_  
PLAT BOOK \_\_\_\_\_ PAGES \_\_\_\_\_  
SIGNED Betty J. Rode GUERNSEY COUNTY, OHIO  
COUNTY RECORDER

TYPE FUNDS: STATE

REV	DATE	DESCRIPTION

## SUMMARY OF ADDITIONAL RIGHT OF WAY PID: 5841

TOTAL NUMBER OF:  
5 OWNERSHIPS  
0 TOTAL TAKES  
0 OWNERSHIPS WITH STRUCTURES INVOLVED  
0 OWNERSHIPS WITH "P" ITEMS

PARCEL	OWNER	SHEET NO.	OWNERS RECORD		RECORD AREA	TOTAL P.R.O.	GROSS TAKE	P.R.O. IN TAKE	NET TAKE	STRUC-TURE	NET RESIDUE		TYPE FUND	AUDITOR PARCEL NO.	REMARKS AND PERSONALITY
			BOOK	PAGE							LEFT	RIGHT			
1-WD	JOHN & ANNA HORNAR	3	206	584	31.50 AC.	0.454 AC.	0.230 AC.	0.191 AC.	0.039 AC.	NO	31.270 AC.		STATE	38-00201	OR-65-918
IX		3	206	584	31.50 AC.		0.048 AC.	0.0000 AC.	0.048 AC.	NO			STATE	38-00201	OR-65-935
2-WD	HOWARD B. REEF & PRODY	364	41	397	9.847 AC.	0.947 AC.	0.557 AC.	0.384 AC.	0.173 AC.	NO	9.290 AC.		STATE	38-02458-002	OR-65-924
3-WD	CARI & PATRICIA ANN DYER	4	307	812	234.689 AC.	5.991 AC.	0.617 AC.	0.383 AC.	0.234 AC.	NO	173.014 AC.	61.058 AC.	STATE	38-02458	ALSO SEE DEED BOOK 304 PG 114 OR-65-921
3X		4	307	812	234.689 AC.		0.021 AC.	0.000 AC.	0.021 AC.	NO			STATE	38-02458	OR-65-939
3X-1		4	307	812	234.689 AC.		0.015 AC.	0.000 AC.	0.015 AC.	NO			STATE	38-02458	OR-65-941
4-WD	KEITH J. AND DARLENE K. LARRICK	3	9	229	5.254 AC.	0.448 AC.	0.206 AC.	0.188 AC.	0.018 AC.	NO	5.048 AC.		STATE	38-0472	OR-65-930
4X		3	9	229	5.254 AC.		0.012 AC.	0.000 AC.	0.012 AC.	NO			STATE	38-0472	OR-65-925
5-WD	BRUCE KACKLEY	1	311	372	95.203 AC.	0.357 AC.	0.396 AC.	0.357 AC.	0.039 AC.	NO	94.807 AC.		STATE	38-00495	OR-65-915
5X		1	311	372	95.203 AC.		0.009 AC.	0.000 AC.	0.009 AC.	NO			STATE	38-00499	OR-65-937
5X-1		1	311	372	95.203 AC.		0.028 AC.	0.000 AC.	0.028 AC.	NO			STATE	38-00499	OR-65-947

CENTERLINE OF SURVEY PLAT AND SUMMARY OF ADDITIONAL R/W GUE-821-(2.59)(2.69)

GUE-821-001 07/16/92 (RWR)